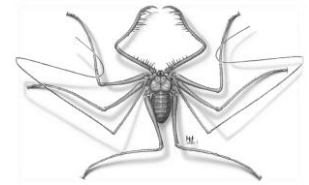


EILEEN ANNE HEBETS, PH.D.

402 Manter Hall | School of Biological Sciences | University of Nebraska-Lincoln
Office Phone: 402.472.2571 | Email: ehébets2@unlnotes.unl.edu
<http://www.biosci.unl.edu/labs/hebets/index.html>



POSITIONS HELD

2015 – present Professor, School of Biological Sciences, University of Nebraska
2010 – present Courtesy Faculty, Department of Entomology, University of Nebraska
2010 – 2015 Associate Professor, School of Biological Sciences, University of Nebraska
2012 – 2013 Visiting Academic Scholar, Macquarie University, NSW, Australia
2008 – 2010 Harold and Esther Edgerton Junior Faculty, UNL
2005-2010 Assistant Professor, School of Biological Sciences, University of Nebraska
2004-2005 Assistant Professor, Department of Environmental Science Policy and Management, Division of Insect Biology, University of California Berkeley
2004-2005 Curator Essig Museum, University of California Berkeley
2004-2005 Member of the Helen Wills Neuroscience Institute, University of California, Berkeley
2002-2003 NIH Post-Doctoral Research Fellow, Department of Neurobiology and Behavior, Cornell University (June 2002-November 2003)

EDUCATION

Ph.D. Ecology and Evolutionary Biology, University of Arizona (May 2002)
M.S. Ecology and Evolutionary Biology, University of Arizona (December 1998)
M.S. Biology, University of Cincinnati (August 1996)
B.A. With Honors, Cum Laude, Biology, Albion College (May 1994)

PROFESSIONAL TRAINING

Communications Workshop – *Becoming EPSCoR Champions* (NSF-funded) May, 2013
Naturalist Outreach Science Outreach Workshop – (NSF funded) Cornell University, fall 2015

PEER REVIEWED PUBLICATIONS (present to past; *indicates undergraduate authors)

- As of 26th January, 2015 according to Google Scholar: h-index = 23; i10-index = 40

In Review/Revision

Schwartz, S.K, W. E. Wagner, and **E. A. Hebets**. *In revision*. Benefits of sexual cannibalism in the dark fishing spider. *Current Biology*.

Patricelli, G.L. and **Hebets, E.A.** *in review*. New dimensions in animal communication. *Current Opinion in Behavioral Sciences* (invited manuscript)

(* indicates co-first authorship)

2016

83. Costa, T., **Hebets, E.A.**, Melo, D., and Willemart, R. *in press*. Costly learning: preference for familiar food persists despite negative impact on survival. *Biology Letters*.
82. Chelini, M. and **E.A. Hebets**. *In press*. Female decision to mate multiply in the absence of fitness benefits in a species with female biased sexual size dimorphism. *Animal Behavior*.
81. Stafstrom, J. and **E.A. Hebets**. *in press*. Nocturnal foraging enhanced by extreme sensory structures in a net-casting spider. *Biology Letters*. (Cover Photo)
80. Wiegmann, D.D., **E.A. Hebets**, W. Gronenberg, J.A. Graving, and V. P. Bingman. *in press*. Amblypygids: Model organisms for the study of arthropod navigation mechanisms in complex environments? *Frontiers Behavioral Neuroscience*.

79. **Hebets, E.A***, Barron, A.B.* , Balakrishnan, C.N., Hauber, K.L., Mason, P.H., and M.E., Hoke. 2016. A systems approach to animal signaling. *Proceedings of the Royal Society B*
78. Anderson, A. and **E.A.Hebets**. *in press*. Benefits of sexual dimorphism and copulatory silk wrapping in the sexually cannibalistic nursery web spider, *Pisaurina mira*. *Biology Letters*.
77. Chapin, K.J. and **E.A. Hebets**. *in press*. Invited review: Behavioral ecology of amblypygids. *Journal of Arachnology*.
76. Chelini, Marie-Claire and **E.A. Hebets**. 2016. Absence of mate choice and postcopulatory benefits in a species with extreme sexual size dimorphism. *Ethology* 122: 95 – 104.

2015 (n = 6)

75. Fowler-Finn, K.D., L. Sullivan-Beckers, A.M. Runck, and **E.A. Hebets**. 2015. The complexities of female mate choice and male polymorphisms: Elucidating the role of genetics, age, and mate-choice copying. *Current Zoology* 61: 1015 – 1035 (cover photo; invited paper).
74. A.B. Barron*, **E.A. Hebets***, T.A. Cleland, C.L. Fitzpatrick, M.E. Hauber, and J.Stevens. 2015. *FORUM*: Embracing multiple definitions of learning. *Trends in Neuroscience* 38:405-407. (*shared first author)
73. Lin, T.A., Zhang, S., Liao, C.P., **Hebets, E.A.** and Tso, I.M. 2015. A dual function of white colouration in a nocturnal arthropod. *Animal Behaviour* 108: 25 - 32
72. Rosenthal, M.F. and **E. A. Hebets**. 2015. Temporal patterns of nutrition-dependence in male traits and their varying impacts on mating success. *Animal Behaviour* 103: 75 – 82.
71. **Hebets, E.A.**, M. Hansen*, T.C. Jones, and D. J. Wilgers. 2015. Octopamine levels predict male mating tactic expression in the wolf spider *Rabidosa punctulata*. *Animal Behaviour* 100: 136 – 142.
70. Wilgers, D. J. and **E. A. Hebets**. 2015. Functional Approach to Condition. (invited author) In *Animal Signalling: A functional Approach*. Ed. D. J. Irschick, M. Briffa, and J. Podos. Ralph Wiley Press.

2014 (n = 6)

69. **Hebets, E. A.**, Aceves-Aparicio, A., Aguilar-Argüello, S., Bingman, V.P., Escalante, I., Gering, E. J., Nelsen, D.R., Rivera, J., Sánchez-Ruiz*, J. A., Segura-Hernández*, L., Settepani, V., Wiegmann, D. D., Stafstrom, J. 2014. Multimodal sensory reliance in the nocturnal homing of the amblypygid *Phrynus pseudoparvulus* (Class Arachnida, Order Amblypygi)? *Behavioural Processes* 108: 123 – 130.
68. Herberstein, M, A. E. Wignall, E. A. Hebets, J.M. Schneider. 2014. Dangerous mating systems: signal complexity, signal content and neural capacity in spiders. *Neuroscience and Biobehavioral Reviews*. 46: 509 – 518 (cover photo).
67. Deng, B, A. Estes*, B. Grieb*, D. Richard*, B. Hinds, **E. A. Hebets**. 2014. A male spider's ornamentation polymorphism maintained by opposing selection with two niches. *Journal of Theoretical Biology* 357: 301 – 111.
- 66. Hebets, E.A.**, Gering, E.J., Bingman, V., Weigmann, D. 2014. Nocturnal homing in the tropical amblypygid *Phrynus pseudoparvulus* (Class Arachnida, Order Amblypygi). *Animal Cognition* 17: 1013 – 1018.
65. Schwartz, S. K., W.E. Wagner Jr., **E.A. Hebets**. 2014. Obligate male death and sexual cannibalism in dark fishing spiders. *Animal Behaviour* 93, 151 – 156.
64. Sullivan-Beckers, L. and **E. A. Hebets**. 2014. Tactical adjustment of signaling leads to increased mating success and survival. *Animal Behavior* 93: 111 – 117.

2013 (n = 10)

63. Wilgers, D.J., D. Wickwire*, **E. A. Hebets**. 2013. Detection of predatory eavesdroppers alters mating tactic expression in male wolf spiders. *Behaviour*. 151: 573 – 590.
62. Stubbendieck, R. M.* , A. J. Zera, **E. A. Hebets**. 2013. No evidence for a role of ecdysteroids in the reproductive behavior of *Schizocosa* wolf spiders. *Journal of Arachnology*. 41: 349 – 355.
61. Rodriguez, R. L., J. W. Boughman, D. A. Gray, **E. A. Hebets**, G. Hobel, and L. B. Symes. 2013. Divergence in mating displays predicted by the amount of divergence in mating preferences, not by the strength of mate preferences. *Ecology Letters* 16: 964 – 974.

60. Higham, J.P. and **E. A. Hebets**. 2013. An introduction to multimodal communication. *Behavioral Ecology and Sociobiology* (editorial for Special Issue on Multimodal Communication) 67: 1381 – 1388. 59.
59. Schwartz, S. K., W. E. Wagner Jr., **E. A. Hebets**. 2013. Spontaneous male death and monogyny in the dark fishing spider. *Biology Letters* 9: 1-4.
58. Fowler-Finn, K. D., M. F. Rosenthal, **E. A. Hebets**. 2013. Locomotor performance varies with adult phenotype in ornamented/non-ornamented wolf spiders. *Ethology* 119: 570 – 580.
57. Stafstrom, J.A. and **E. A. Hebets**. 2013. Female mate choice for multimodal courtship and the importance of the signaling background for selection on male ornamentation. *Current Zoology* 59: 200 – 2010 (invited author; cover photo).
56. Pesek, M. F., K. D. Fowler-Finn, L. Sullivan-Beckers, **E. A. Hebets**. 2013. Foreleg ornaments do not hinder foraging efficiency. *Journal of Insect Behavior*. 26: 837 – 849. 55.
55. Herberstein, M.E. and **E.A. Hebets**. 2013. Why are spiders good models for behavioural research. In: *Spider Research in the 21st Century* (Ed by D. Penney). Siri Scientific Press, Manchester.
- 54. Hebets, E. A., C. Vink, L. Sullivan-Beckers, and M. F. Rosenthal**. 2013. The dominance of seismic signaling and the evolution of signal complexity in the multimodal courtship displays of *Schizocosa* wolf spiders. *Behavioral Ecology and Sociobiology* (invited contribution) 67: 1483 – 1498.

2012 (n = 5)

53. Wilgers, D. J. and **E. A. Hebets**. 2012. Seismic signaling is crucial for female mate choice in a multimodal signaling wolf spider. *Ethology* 118: 387 – 397.
52. Wilgers, D. J. and **E. A. Hebets**. 2012. Age related female mating decisions are condition dependent in wolf spiders. *Behavioral Ecology and Sociobiology* 66: 29 – 38.
51. Willemart, R. H. and **E. A. Hebets**. 2012. Sexual differences in the behavior of harvestman *Leioboeum vittatum* (Opiliones, Sclerosomatidae) towards conspecific cues. *Journal of Insect Behaviour* 25: 12 – 23.
50. Safran, R., S. Flaxman, M. Kopp, D. E. Irwin, D. Briggs, M. R. Evans, W. C. Funk, D. A. Gray, **E. A. Hebets**, N. Seddon, E. Scordato, L. B. Symes, J. A. Tobias, D. P. L. Toews, A. C. Uy. 2012. A robust new metric of phenotypic distance to estimate and compare multiple trait differences among populations. *Current Zoology* 58: 426 – 439 (Invited Contribution)
49. Rosenthal, M. F. and **E. A. Hebets**. 2012. Resource heterogeneity interacts with courtship rate to influence mating success in the wolf spider *S. floridana*. *Animal Behaviour* 84: 1341 – 1346.

2011 (n = 11)

48. Fowler-Finn, K. D. and **E. A. Hebets**. 2011. The degree of response to increased predation risk corresponds to male secondary sexual traits. *Behavioral Ecology* 22: 268 – 275.
47. Fowler-Finn, K. D. and **Hebets, E. A.** 2011. More ornamented males exhibit increased predation risk and antipredator escapes, but not greater mortality. *Ethology* 117: 102 – 114.
- 46. Hebets, E.A., J. A. Stafstrom, R. L. Rodriguez, and D. J. Wilgers**. 2011. Enigmatic ornamentation relieves male reliance on courtship performance for mating success. *Animal Behaviour* 81: 963 – 972.
- 45. Hebets, E. A.** 2011 Current status and future directions of research in complex signaling. *Current Zoology* 57: I-V. (editorial for Special Issue on Complex Signaling)
44. Rundus, A. S., L. Sullivan-Beckers, D. Wilgers, and **E. A. Hebets**. 2011. Females are choosy in the dark: context-dependent reliance on courtship components and its impact on fitness. *Evolution* 65: 268-282.
43. Santer, R. D. and **E. A. Hebets**. 2011a. Evidence for air movement signals in the agonistic behaviour of a nocturnal arachnid (Order Amblypygi). *PLoS ONE* 6: 1-6.
42. Santer, R. D. and **E. A. Hebets**. 2011b. The sensory and behavioural biology of whip spiders (Arachnida, Amblypygi). In Jerome Cases, editor: *Advances in Insect Physiology* 41: 1 – 64.
41. Sullivan-Beckers, L. and **E. A. Hebets**. 2011. Modality-specific experience with female feedback increases the efficacy of courtship signaling in male wolf spiders. *Animal Behaviour* 82: 1051 - 105740.
40. Wilgers, D. J. and **E. A. Hebets**. 2011. Complex courtship displays facilitate male reproductive success and plasticity in signaling across variable environments. *Current Zoology* 57: 175 – 186. (Special issue)

39. Willemart, R. H., R. D. Santer, A. J. Spence, and **E. A. Hebets**. 2011. A sticky situation: Solifugids (Arachnida, Solifugae) use adhesive organs on their pedipalps for prey capture. *Journal of Ethology* 29: 177 – 180.
38. **Hebets, E. A.** and A. S. Rundus. 2011. Chemical Communication in a Multimodal Context. In: *Chemical Communication in Crustaceans*. (Ed by T. Breithaupt & M. Thiel), pp. 335 – 354. New York, New York: Springer. (Invited contribution)

2010 (n = 4)

37. Byers, J., **E. A. Hebets**, and J. Podos. 2010. Female mate choice based upon male motor performance. *Animal Behavior* 79: 771 – 778.
36. Rundus, A. S., R. D. Santer, and **E. A. Hebets**. 2010. Multimodal courtship efficacy of *Schizocosa retrorsa* wolf spiders: implications of an additional signal modality. *Behavioral Ecology* 21: 701 – 707.
35. Elias, D.O, Mason, A. C. and **Hebets, E. A.** 2010. A signal-substrate match in the substrate-borne component of a multimodal courtship display. *Current Zoology* 56: 370 – 378. (invited contribution)
34. **Hebets, E.A.** and Sullivan-Beckers, L. 2010. Mate Choice and Learning. In: Breed M.D. and Moore J., (eds.) *Encyclopedia of Animal Behavior*, volume 2, pp. 389 - 393 Oxford: Academic Press. (invited author)

2009 (n = 5)

33. Santer, R.D. and **Hebets, E.A.** 2009. Prey capture by the whip spider *Phrynus marginemaculatus*. *Journal of Arachnology* 37: 109 – 112.
32. Santer, R. D. and **E. A. Hebets**. 2009. Tactile learning of spatial landmarks in whip spiders (Arachnida, Amblypygi). *Journal of Comparative Physiology A* 195: 393 – 399.
31. Wilgers, D. J., A. C. Nicholas, D. H. Reed, G. E. Stratton, and **E. A. Hebets**. 2009. Condition dependent alternative mating tactics in a sexually cannibalistic wolf spider. *Behavioral Ecology* 20: 891 – 900.
30. Shamble, P. S.* , D. J. Wilgers, K. A. Swoboda, and **E. A. Hebets**. 2009. Courtship effort is a better predictor of mating success than ornamentation for male wolf spiders. *Behavioral Ecology* 20: 1242 – 1251.
29. Chelini, Marie-Claire*, R. H. Willemart, and **E. A. Hebets**. 2009. Costs and benefits of freezing behaviour in the harvestman *Eumesosoma roeweri* (Arachnida, Opiliones). *Behavioural Processes* 82: 153 – 159.

2008 (n = 4)

28. **Hebets, E.A.**, Elias, D.O., Mason, A.C., Miller, G.L., and Stratton, G.E. 2008. Substrate-dependent signaling success in the wolf spider *Schizocosa retrorsa*. *Animal Behaviour* 75: 605 – 615. 27.
27. Santer, R. D. and **Hebets, E.A.** 2008. An agonistic signal received by an arthropod filiform hair alludes to the prevalence of near-field sound communication. *Proceedings of the Royal Society B* 275: 363 – 368 (Highlighted Article Online)
26. **Hebets, E.A.**, Wesson, J.* , and Shamble, P.* 2008. Diet influences mate choice selectivity in adult female wolf spiders. *Animal Behaviour* 76: 355 – 363.
25. **Hebets, E. A.** 2008. Seismic signal dominance in the multimodal courtship display of the wolf spider *Schizocosa stridulans* Stratton 1991. *Behavioral Ecology* 19: 1258 – 1266.

2007 (n = 4)

24. **Hebets, E.A.** 2007. Early experience does not influence heterospecific recognition in the wolf spider *Schizocosa uetzi*. *Journal of Arachnology* 35: 1 – 10.
23. Framenau, V. W., **E. A. Hebets**. 2007. A review of leg ornamentation in male wolf spiders, with the description of a new species from Australia, *Artoria schizocoides* (Araneae, Lycosidae). *Journal of Arachnology* 35: 89 – 101.
22. VanderSal, N. D. & **Hebets, E. A.** 2007. Cross-modal effects on learning: A seismic stimulus improves color discrimination in a jumping spider. *Journal of Experimental Biology* 210: 3689-3695.

21. **Hebets, E.A.** and Vink, C. 2007. Experience leads to preference: Experienced females prefer brush-legged males in a population of syntopic wolf spiders. *Behavioral Ecology* 18: 1010-1020.

2006 (n = 6)

20. Elias, D.O., Lee, N., **Hebets, E. A.**, and Mason, A. C. 2006. Seismic signal production in wolf spiders: Parallel versus serial multicomponent signals. *Journal of Experimental Biology* 209: 1079-1084. (cover photo)
19. Fowler-Finn, K. D.* & **E. A. Hebets**. 2006. An examination of agonistic interactions in the whip spider *Phrynus marginemaculatus* (Arachnida, Amblypygi) *Journal of Arachnology* 34: 62-76.
18. Elias, D. O., **Hebets, E. A.**, and Hoy, R. R. 2006. Female preference for signal complexity. *Behavioral Ecology*. 17: 765-771.
17. **Hebets, E.A.**, Cuasay, K.*, and Rivlin, P.K. 2006. The role of visual ornamentation in female choice of a multimodal male courtship display. *Ethology* 112: 1062 – 1070.
16. Spence, A. J. & **E. A. Hebets**. 2006. Anatomy and physiology of giant fibers in the antenniform leg of the amblypygid *Phrynus marginemaculatus*. *Journal of Arachnology* 34: 545 – 556.
15. Elias, D.O., **Hebets, E. A.**, Hoy, R. R., Maddison, W. P., and Mason, A. C. 2006. Regional song differences in sky-island populations of the jumping spider *Habronattus pugillis* Griswold. *Journal of Arachnology* 34: 566-577.

2005 (n = 5) (arrival at UNL)

14. **Hebets, E. A.** 2005. Attention-altering interactions among signals in multimodal wolf spider courtship displays. *Behavioral Ecology* 16: 75-82.
13. **Hebets, E. A.** and D. R. Papaj. 2005. Complex signal function: Developing a framework of testable hypotheses. *Behavioral Ecology and Sociobiology* 57: 197-214.
12. Elias, D. O., **E. A. Hebets**, A. C. Mason, and R. R. Hoy. 2005. Seismic signals are crucial for male mating success in a visual specialist jumping spider (Araneae: Salticidae). *Animal Behaviour* 69: 931-938.
11. **Hebets, E.A.** & W.P. Maddison. 2005. Xenophilic mating preferences among populations of the jumping spider *Habronattus pugillis* Griswold. *Behavioral Ecology* 16: 981-988.
10. **Hebets, E. A.** 2003. Subadult experience influences adult mate choice in an arthropod: Exposed female wolf spiders prefer males of a familiar phenotype. *Proceedings of the National Academy of Science* 100: 13390-13395.

Prior to 2005 (n = 9)

9. **Hebets, E. A.** 2002. Relating the unique sensory system of amblypygids to the ecology and behavior of *Phrynus parvulus* from Costa Rica (Arachnida, Amblypygi). *Canadian Journal of Zoology* 80: 286-295.
8. Foelix, R. F. and **E. A. Hebets**. 2001. Sensory biology of whip spiders (Arachnida, Amblypygi). *Andrias* 15: 129-140.
7. **Hebets, E. A.** & R.F. Chapman. 2000. Surviving the flood: Plastron respiration in the non-tracheate arthropod *Phrynus marginemaculatus* (Amblypygi; Arachnida). *Journal of Insect Physiology* 46: 13-19.
6. **Hebets, E. A.** and G. W. Uetz. 2000. Leg ornamentation and the efficacy of courtship display in four species of wolf spider (Araneae: Lycosidae). *Behavioral Ecology and Sociobiology*. 47 (4): 280-286.
5. **Hebets, E. A.** and R.F. Chapman. 2000. An electrophysiological study of olfaction in the whip spider *Phrynus parvulus* (Arachnida, Amblypygi). *Journal of Insect Physiology* 46(11): 1441-1448.
4. **Hebets, E. A.** and G. W. Uetz. 1999. Female responses to isolated signals from multi-modal male courtship displays in the wolf spider genus *Schizocosa* (Araneae: Lycosidae). *Animal Behavior* 57: 865-872.
3. Miller, G. L., G. E. Stratton, P.R. Miller, and **E. A. Hebets***. 1998. Geographic variation in male courtship behaviour and sexual isolation in wolf spiders of the genus *Schizocosa*. *Animal Behavior* 56: 937-951.
2. **Hebets, E. A.***, G.E. Stratton, and G.L. Miller. 1996. Habitat and courtship behavior of the wolf spider *Schizocosa retrorsa* (Banks) (Araneae; Lycosidae). *Journal of Arachnology* 24: 141 - 147.

1. Stratton, G., **E. A. Hebets***, P. R. Miller, and G. L. Miller. 1996. Pattern and duration of copulation in wolf spiders (Araneae, Lycosidae). *Journal of Arachnology* 24: 186 - 200.

PEER REVIEWED PUBLICATION AWARDS/HONORS

(**Hebets** & Papaj, 2005) was the highest cited paper in *Behavioral Ecology and Sociobiology* for the year 2012.

(**Hebets** & Papaj, 2005) and (Byers, **Hebets**, and Podos, 2010) are both 'Highly Cited' Papers in *Essential Science Indicators* which lists the top cited papers over the past 10 years in each of 22 scientific fields.

(Byers, **Hebets**, and Podos, 2010) is the top most cited article in the journal *Animal Behaviour* since 2010 (as of Jan. 2015)

OUTREACH PRODUCTS AND DELIVERABLES

Path of Predators activity booklet

Assemble an Arachnid mobile device application: <http://eightlegs.herokuapp.com/>

Video Production Overview of *Eight-Legged Encounters*:

<https://www.youtube.com/watch?v=UquUdbXpNb8&feature=youtu.be>

Trading Cards for *Eight-Legged Encounters*: <https://www.youtube.com/watch?v=d5juWtRIK5I>

BOOK REVIEWS

Hebets, E. A. 2003. Whip Spiders (Chelicerata: Amblypygi): Their Biology, Morphology and Systematics. *Quarterly Review of Biology* 78: 485.

INVITED AUTHOR

Hebets, E. A. 2005. Biology: A Special Report. In 2005 Science Year: The World Book Annual Science Supplement. World Book, Inc. Chicago, pp 60-75.

GRANTS

2005 – Present (* indicates active grants)

Searle Scholars Program Fellowship 2005-2008 (240K) (PI)

Nebraska EPSCoR First Award Grant 2006 (40K) (PI)

NSF CAREER Grant 2007 - 2013 (680K) (PI)

NSF Dissertation Improvement Grant (Kasey Fowler-Finn) 2008 (~11K) (PI)

NSF REU summer 2009 (6K) (PI)

UNL Interdisciplinary seed grant 2009 (5K) (Co-PI)

NSF REU summer 2010 (6K) (PI)

NSF CRPA - Informal Education with Arachnids 2012 – 2014 (150K) (PI)

National Geographic Explorer's Club– Buttress Bound: vertebrate-like navigation by the nocturnally active, neotropical whip spider, *Phrynus pseudoparvulus*. May 2014 – May 2015. (18K) (Co-PI)

UNL New Directions Grant– Creating Science Inspired Communities Eight Steps at a Time. June 2014 - 2015 (13K) (PI)

UNL Seed Grant– Collaboration with NET to develop a mobile application for *Eight-Legged Encounters* (12K) (PI) (2014 – 2015)

*NSF IOS - Collaborative Research – Navigation and the Neural Integration of Multimodal Sensory Information in the Brain of an Arthropod (Co-PI) 2015 – 2019 (272K)

NSF IOS – Collaborative Research: A Comparative Systems Biology Approach to Complex Signaling (Co-PI, pre-proposal – recommended for funding)

Submitted & Pending

NSF Dissertation Research: Sensory system trade-offs in the net-casting spider family, Deinopidae (11K, pending)
NSF ITEST - Collaborative Research: Inspiring DREAMS: Discovery, Research, and Engagement using Arachnids in Middle school STEM (Co-PI; 1.3 million; pending)
HHMI pre-proposal – Science Scholars Program (Institutional Representative)

Prior to 2005 (all sole PI)

Sigma Xi, 1994
Sigma Xi, 1995
American Arachnological Society, 1995
RTG Grant, Department of Ecology and Evolutionary Biology, University of Arizona, 1997
RTG Grant, Department of Ecology and Evolutionary Biology, University of Arizona, 1998
Organization for Tropical Studies (OTS) Post Course Award, summer 1998
Organization for Tropical Studies (OTS) Pilot Award, summer 1998
American Arachnological Society Grant, summer 1998
RTG Grant, Department of Ecology and Evolutionary Biology, University of Arizona, 1999
Animal Behavior Society Student Grant, summer 1999
RTG Grant, Department of Ecology and Evolutionary Biology, University of Arizona, fall 1999
International Society for Chemical Ecology Student Travel Grant, fall 1999
Center for Insect Science Graduate Student Grant, spring 2000
Junior Faculty Research Grant, Committee on Research, University of CA Berkeley 2004-2005

HONORS & AWARDS

Webster Scholarship, Albion College
Beta Beta Beta
Alpha Lambda Delt
Omicron Delta Kappa
Honors program, Albion College
Outstanding senior biology major, Albion College, 1994
Chickering Award, Albion College, 1994
Edmund & Kathleen Jenkins Research Award, Albion College, 1994
Weimann-Wendell Fellowship, U. of Cincinnati, Dept. of Biology, 1995
Graduate Fellowship, U. of Arizona, Dept. of Ecology and Evolutionary Biology, spring 1997
First place in Student paper competition, XIVth International Arachnological Congress, summer 1998
Organization for Tropical Studies (OTS) Graduate Student Fellowship, summer 1999
Student Travel Award Recipient, International Society for Chemical Ecology Meetings, Marseille, France
November 1999
Invited resource person on OTS 99-3 Tropical Ecology course
RTG Fellowship, Department of Ecology and Evolutionary Biology, University of Arizona, fall 2000
Second place in Student Poster Competition: American Arachnological Society Meetings, summer 2000
Howshaw Award recipient, Dept. of Ecology & Evolutionary Biology, University of Arizona, fall 2000
RTG Fellowship, Department of Ecology and Evolutionary Biology, University of Arizona, fall 2001- spring 2002
Dean's Fellowship, Graduate College, University of Arizona. declined fall 2000-spring 2001
NIH Training Grant Post-Doctoral Fellow, Department of Neurobiology and Behavior, Cornell University, summer 2002-fall 2003

T.O. Haas outstanding faculty award, UNL 2007

(Since arriving at UNL)

Harold and Esther Edgerton Assistant Professor (2008-2009 and 2009-2010) UNL

Outstanding New Investigator Award, Animal Behavior Society 2008

First chosen "Academic Star" – College of Arts & Sciences, UNL August 2008

Certificate of Recognition for Contribution to Students from the Parents Association and the Teaching Council of the University of Nebraska, Lincoln January 2009
 “Educator of the Month”, Kappa Delta sorority @ UNL, March 2010
 Sigma Xi Outstanding Young Scientist for 2011, UNL Chapter of Sigma Xi
 Outstanding Postdoc Mentor Award, UNL 2011
 Nominated for ‘Professor of the Year’ 2014 award (nominated by Office of Research, UNL)
 T.O. Haas outstanding faculty award for outreach, UNL 2014

CROSS-DISCIPLINARY COLLABORATIONS

I collaborated with composer Garrett Hope (former UNL graduate student) and Susan Levine (Associate Professor and Head of Dance Program at UNL) in creating *Schizocosa*, a musical/dance performance. Garrett Hope composed the music and Susan Levine choreographed the ~8 minute long piece inspired by my spider research. Research videos including the songs and dances of spiders were provided to the two artists and Garrett created the musical score with spider sounds while the choreography is based upon research videos provided by my laboratory.

Schizocosa has been performed multiple times at UNL in addition to:

- The Kansas Dance Festival at Wichita State University (Nov., 2010)
- Eight-Legged Encounters event at the Denver Museum of Nature and Science (Sept., 2014)
- Fine Arts Day for Prairie Hill Learning Center (Dec. 2014)

PRESS COVERAGE

Major/ High Profile Research-Related Coverage

Publication/Interview	Year	Highlighted Research
New Scientist	1999	
NPR Interview	2003	Hebets, 2003
CBC Radio Quirks & Quarks	2003	Hebets, 2003
New York Times	2003	Hebets, 2003
	2013	Schwartz, Wagner & Hebets 2013
Science News	2003	Hebets, 2003
	2013	Schwartz, Wagner & Hebets 2013
The Economist	2003	Hebets, 2003
National Wildlife Magazine	2004	Hebets, 2003
Discover Magazine	2004	Hebets, 2003
Zoogoer	2004	Hebets, 2003
Outside JEB	2008	Santer & Hebets 2008
DiscoverMagazine.com	2011	Santer & Hebets 2011
National Geographic	2013	Schwartz, Wagner & Hebets 2013
WIRED Science	2013	Schwartz, Wagner & Hebets 2013
io9	2013	Schwartz, Wagner & Hebets 2013
ScienceNOW	2013	Schwartz, Wagner & Hebets 2013
LiveScience	2013	Schwartz, Wagner & Hebets 2013

Minor/Low Profile Research-Related Coverage (*italics are internet or radio coverage*)

USA Today	S. Florida Sun-Sentinel	Raleigh-Durham Herald	Reuters
Phil. Inquirer	Ventura County Star	Naples Daily News	Atlanta Constitution
San DiegoTribune	Houston Chronicle	The News Tribune	Boston Globe
India Times	<i>BBC Online</i>	<i>CNN</i>	<i>ABC News</i>
<i>Findlaw</i>	<i>Lycos News</i>	<i>AT&T Worldnet Service</i>	<i>Excite News</i>
Yahoo	<i>UK & Ireland News</i>	<i>Netscape Netcenter</i>	<i>Scientific American</i>

<i>MSNBC News</i>	<i>Newsday</i>	<i>CBC News</i>	<i>Silicon Valley.com</i>
<i>LA Times.com</i>	<i>New York Times</i>	<i>WTOP-AM</i>	<i>KTAR-AM</i>
<i>WBT-AM</i>	<i>UNL News</i>		

Miscellaneous Media Coverage

Lincoln Journal Star (2007)	Omaha Herald (2010)
Lenoir City News Harold (2008)	Inside Science Service (2011)
Scarlett, UNL publications (2008)	New Scientist (2012)
Daily Nebraskan (2016)	

Public Engagement /Community Outreach Coverage

Channel 8 News (2013)	Scarlet (2013)
Channel 10/11 News (2013)	KFRX Radio (2014)
NewsNetNebraska (2013)	

Television Coverage

Canadian Discovery Channel 5 min. segment in Beetlemania (1998)
 Sciencentral – distributor for television stations (2003); WCJB, WLOX, WCJB (2003)

PROFESSIONAL SERVICE

Invited Journal Reviews

Acta Ethologica	Ethology Ecology and Evolution	J of Insect Behavior
American Naturalist	BMC Evolutionary Biology	J of Insect Physiology
Animal Behaviour	Bulletin of Entomological Research	J of the NY Entomological Society
Animal Biology	Canadian Journal of Zoology	Journal of Tropical Ecology
Animal Cognition	Current Biology	Naturwissenschaften
Behavioral Ecology	Ethology	PLOS One
Behav Ecol & Sociobio	Evolution	Neurosci & Biobehav Reviews
Behavioural Processes	Folia Primatologica	Proc of the Royal Society of London B
Bio Assays	Functional Ecology	Psyche
Bio J of the Linnean Society	J of Arachnology	Science
Biology Letters	J of Comparative Physiology	

Panelist for Research Proposals, Departmental Reviews, & International Fellowships

NSF IOS Proposal Review Panel for Behavioral Systems Cluster (spring 2008)
 NSF Dissertation Improvement Grant Panel for Behavioral Systems Cluster (spring 2009)
 Invited to participate in NSF IOS Proposal Review Panel for Behavioral Systems Cluster (spring 2010 – declined due to conflict in time with external review panel for UofA)
 External review panelist for University of Arizona’s EEB Department (April 2010)
 Reviewer for Animal Behavior Society Student Research Grants (spring 2012)
 University of Wisconsin Internal Grant Review (2xs between 2010 – 2013)
 NSF Panelist: Division of Research on Learning in Formal and Informal Setting (DRL) – Advancing Informal STEM Learning (AISL) (spring, 2014)
 Reviewer for Rutherford Discovery Fellowship Application – New Zealand Funding Agency
 Reviewer for Dutch Research Council Fellowship Application (2014)
 UNL EPSCoR First Award panelist (fall, 2014)
 National Science Centre, Poland grant review (winter 2016)
 NSF Panelist: Division of Research on Learning in Formal and Informal Settings (DRL) – Advancing Informal STEM Learning (AISL) (winter, 2016)
 NSF Panelist: STEM+C (spring, 2016)

Reviewer for Promotion Cases

- Outside Reviewer for Renewable Term Associate Professor, Department of Zoology, University of Oklahoma (fall 2011)
- Reviewer for full professor case (Matthew Persons, Susquehanna University)
- Reviewer for full professor case (Melissa Hughes, College of Charleston)
- Reviewer for tenure case (Jonathan Pruitt, University of Pittsburg) (2015)
- Reviewer for Senior Research Associate renewal (Linda Rayor, Cornell University) (2015)
- Reviewer for 4th year tenure review (Annie Leonard, University of Nevada-Reno) (2015)
- Reviewer for Teaching Professor (Sarah Bush, University of Missouri) (2015)

Professional Consulting

- Consultant for the movie "Spiderman" (2002)
- Consultant for "Outside Magazine" Wild File (2005)
- Consultant for Science News article (2005)
- Consultant for Science News article (2006)
- Interviewed for National Geographic News article (2006)
- Consultant for Science World Magazine (Scholastic) (2007)
- Interviewed for TIME magazine article (2007)
- Interviewed for "Ask a Biologist" podcast (Arizona State University)
<http://www.learnoutloud.com/Catalog/Science/Biology/Ask-a-Biologist/23834>
- Interviewed for ScienceNow (<http://sciencenow.sciencemag.org>) regarding article in Current Biology (April 2008)
- Consultant for ScienceNow (2008)
- Consultant for Science News article (2009)
- Consulted for BBC production (fall 2009)
- Consultant for Discovery TV series "The World Without Spiders" (Jan. 2010)
- Consultant for Wired.com article (June 2010)
- Interviewed for Inside Science News Service for input on Johnson et al. Animal Behaviour paper (August 2011)
- Consulted for National Geographic documentary on the most unusual and unique animal body parts (March 2013)
- Consulted for National Geographic 'Weird but True' science writer for inclusion of our amblypygid navigation research in the next verison of the book (2014; book in production highlights amblypygid research)
- Consulted for and quoted in LiveScience online story (fall, 2014)
<http://www.livescience.com/48164-creepy-animals-you-shouldnt-fear.html>
- Consulted for New Scientist news story (winter, 2015)
<http://www.newscientist.com/article/dn26873-zoologger-judo-spider-finds-armoured-foes-achilles-heel.html#.VMpgmWisVRq>

Professional Society Service

- Abstract Reviewer for International Society for Behavioral Ecology (2008)
- Travel Grant Committee for the American Arachnological Society (2007)
- Marketing Chair for American Arachnological Society (2008 – 2009)
- Parliamentarian for the Animal Behaviour Society (fall 2012 – present)
- Symposium organizer for International Ethological Conference 2015 – 'Multimodal Signaling – Is it Special?'
- Committee member for the Herbert Levi Memorial Fund for Arachnological Research (HLMFAR) (fall 2015 – present)

WORKING GROUP PARTICIPATION

- NESCent Working Group “An Integrative Evolutionary Approach to Examine Sexual Selection as a Mechanism of Speciation” (Oct. 2009 - 2011)
- Howard Hughes Medical Institute Janelia Farms “Neurobiology and Evolution of Arthropod Acoustic Communication” (May 2012)
- NESCent Working Group “Toward a unified evolutionary theory of decision-making in animals” (spring 2013 – fall 2014)

EDITORIAL DUTIES

Journal	Years	Position
<i>Southeastern Naturalist</i>	2009 – 2010	One-Time Guest Editor
<i>Behavioral Ecology</i>	2009 – 2014	Editorial Board
<i>Animal Behaviour</i>	2010 – 2013	Editor
<i>Current Zoology</i>	2011	Guest Editor for Special Issue – Complex Signaling
<i>Behavioral Ecology & Sociobiology</i>	2012 – 2013	Co-Guest Editor Special Issue – Multimodal Signaling
<i>Ethology</i>	2014 – present	Editor

UNIVERSITY SERVICE (2006 – present)

Departmental (School of Biological Science)

- GAAN Review Committee (2006 – 2008)
- IEEA Review Committee (2006 – 2007)
- Ecology, Evolution and Behavior Seminar Coordinator (2006 – 2009)
- Search Committee Member – Complex Phenotypes Search (2008; hired Jennifer Brisson)
- Search Committee for External Director of SBS (spring 2010)
- SBS Special Funds Committee (Fall 2011 – 2012)
- Task Force Leader to assess GREG structure (Fall 2012)
- Graduate student representative for Integrative Evolutionary Biology GREG (fall 2010 – 2013)
- SBS Executive Committee Member (fall 2011 – 2013)
- Task Force to Assess Merit Review (Spring – Fall 2014)
- Graduate Student Representative for EEB (spring 2014)
- Faculty Advisor to the BGSA (Biology Graduate Student Association), UNL 2006 – present
- SBS Executive Committee (fall 2014 – fall 2015)
- Promotion and Tenure Committee (fall 2015 – present)

University-Wide (University of Nebraska, Lincoln)

- Panel member for women in academia for WUMN (Oct. 2009)
- Organized “Electrophysiology Workshop” @ UNL (Jan. 2010)
- Member of Life Sciences Advisory Council (fall 2010 – present)
- CB3 Executive Committee (summer 2013 invited)
- Virology Search Committee (fall 2013)
- Museum Advisory Committee (fall 2013 – present)
- Southeast Regional Science Fair Advisory Board (summer 2013 – spring 2014)
- Chancellors Commission on the Status of Women (CCSW) (fall 2013 – present)
- Faculty Council Chair for CCSW (2015 – 2016)
- Research Advisory Board (fall 2013 – present)
- Entomology Search Committee – Pollinator Health (spring 2015)
- College of Arts and Sciences Executive Committee (2015 – present)

SERVICE PRIOR TO 2006

- Biology Graduate Student Association Vice President, University of Cincinnati, 1995 - 1996

Student Representative on Graduate Policy Committee, University of Arizona, 1999
Founder and leader of Graduate Student Discussion, University of Arizona 1999-2002

COMMUNITY SERVICE

Spider Walks and Informal Presentations

Oxford, MS youth group spider walk (2004 & 2005)
1st grade classroom spider presentation, Redwood Heights Elementary School, Oakland, CA (2004)
Oxford, MS girl scout troop spider walk (2004)
4-H National Science and Technology Conference spider walk (2006)
Lincoln Public Schools High School Teacher enrichment program (offered tour lab) (2007)
Spider-walk for Big Red Week Summer Camps at UNL (2007)
Presented in Lincoln Southwest High School Zoology Class (March 2008)
4-H Big Red Summer Camp – Discover Spiders (June 15 – 20th 2008)
Spider-walk for Big Red Summer Camps at UNL (June 17th 2008)
Spider-walk for brownie troop in Lenoir City, TN (July 31st 2008)
Spider research exhibit at the Nebraska State Fair CyberFair (August 2008)
4-H Big Red Summer Camper – Spider Science (June 8 – 12th 2009)
Spider-walk for Bid Red Summer Camps at UNL (June 10th 2009)
Spider Laboratory for “Northeast Upward Bound” program (July 16th 2009)
Spider tutorial and walk for students and families of Prairie Hill Learning Center (Sept. 5th 2009)
Spider walk for adult associated w/local church; Lenoir City TN (May 2010)
Spider Laboratory for “Northeast Upward Bound” program (June 22nd 2010)
Arachnid presentation to teenagers at a Lincoln Detention Center (2010)
Spider tutorial and walk for students and families of Prairie Hill Learning Center (Sept. 13th 2010)
Research presentation to Animal Behavior class at Southwest High School, Lincoln (Sept. 9th, 2010)
Presented in 2 sessions at the Lincoln Public Schools Professional Development Day (August 13th, 2011)
Presented in the 2013 Women in Science Conference – Feb. 2013
Participated in the LPS District Science Fair (5th – 8th graders) by running 4 tables of interactive science activities (March 21st, 2013)
Panelist for ‘Community-Campus Connector’; UNL April 24th 2013
Colorful Creatures Day at Morrill Hall – provided a table with live animals and an art activity “Assemble an Arachnid” (May 18th, 2013)
Upward Bound non-science lab visit (June 18th, 2013)
Upward Bound Science lab visit and experiment coordination/facilitation (June 18th, 2013)
Nighttime spider walk for community, Lenoir City, TN (July 16th 2013)
Bugfest, UNL Entomology Department (~250 participants; Sept. 15th 2013)
Happy HallowGreen, Lincoln Children’s Museum (Oct. 6th, 2013)
Happy HallowGreen, Lincoln Children’s Museum (Oct. 23rd, 2014)
Exotic Animal Day @ Bookworm Bookstore, Omaha, NE (Aug. 23rd, 2015) – 100 attendees
Women in Science dinner, UNL Host (Feb. 19th, 2016)

Eight-Legged Encounters & Related Activities

I developed a family-friendly community engagement event that currently has more than 25 activities and stations designed to use arachnids for informal science education. This event was developed through NSF funding. Below I list the venue and approximate numbers of the public reached.

Eight-Legged Encounters, Morrill Hall - achieved record attendance (847 people in just 3 hours; Feb. 21st 2013)

Eight-Legged Encounters, Butterfly Pavilion, Westminster, CO (500-600 participants; Sept. 22nd, 2013)

Eight-Legged Encounters, Morrill Hall (816 participants; March 16th, 2014)

Eight-Legged Encounters, Denver Museum of Nature and Science, Denver, CO (~3,400 participants; Sept. 28th, 2014)

Mini Eight-Legged Encounters, USA Science and Engineering Festival, Washington DC (invited by NSF; ~30,000 participants; April 2016)

Culler Middle School STEM Explorers Program (ran 'Path of Predators' for 120 middle school children during summer camp – 1 day; June 2014)

Animal Encounters Summer Camp – In the summer of 2014, I designed and implemented a *week long* summer camp (9am – 3pm daily) for youth ranging in age from 3 – 12 @ Prairie Hill Learning Center Montessori School (3 – 6 year olds = 18; 6-9 year olds = 25; 10 – 12 year olds = 10; total 53 youth)

Science Day Camp – April 24th 2015 – developed a day-long science camp for 6 – 13year olds from Prairie Hill Learning Center. 15 students participated

Animal Encounters Summer Camp – 2015, I develop additional modules and learning activities for another 9am – 3pm summer camp for youth. Due the high enrollment, I only taught 6-9 year olds (n = 36) and 10 – 13 year olds (n = 12).

INVITED SEMINARS & LECTURES (2005 – present; 43 total)

- 2005 Fall – Department of Entomology, University of Arizona, Tucson, AZ
- 2006 Spring – Department of Entomology, University of Nebraska
- 2006 Spring - Department of Biology, LeHigh University
- 2006 Fall – Department of Biology, University of Oklahoma
- 2007 Spring – Department of Biology, University of Nebraska Omaha
- 2007 Spring – Department of Biology, University of Maryland
- 2007 Fall – University of Wisconsin, Madison (declined due to maternity leave)
- 2007 Fall – University of Wisconsin, Milwaukee (declined due to maternity leave)
- 2007 Fall – William Jewel College, MO (declined due to maternity leave)
- 2007 Fall – Department of Ecology and Evolutionary Biology, Yale University
- 2008 Spring – Department of Integrated Natural Sciences, Arizona State University West
- 2008 Spring – School of Life Sciences, Arizona State University Tempe
- 2008 Fall – Department of Ecology and Evolutionary Biology, University of Kansas
- 2008 Fall - Bug Lunch, University of Kansas
- 2008 Fall – Department of Entomology, University of Nebraska, Lincoln
- 2008 Fall – Department of Neurobiology and Behavior, Cornell University
- 2008 Fall – Department of Entomology, Cornell University, guest lecture in Spider Biology
- 2008 Fall – Department of Biology, Iowa State University
- 2009 Spring – Department of Ecology and Evolutionary Biology, Kansas State
- 2009 Spring – Department of Biology, University of South Dakota
- 2009 Fall – Department of Biology, University of Missouri
- 2009 Fall – Department of Biology, William Jewell College, MO (declined due to time constraints)
- 2010 Fall – International Society of Behavioral Ecology, Perth, Australia (competitive talk slot)
- 2010 Fall – Department of Entomology, University of Illinois
- 2010 Fall – Illinois Natural History Survey
- 2011 Spring – Math-Biology Seminar Series, University of Nebraska
- 2011 Spring – Department of Biology, Salisbury University
- 2011 Fall – Department of Ecology and Evolutionary Biology, University of Colorado
- 2011 Fall – Department of Biology, Florida State
- 2011 Fall – Ecology and Evolutionary Biology Group, Florida State
- 2011 Fall – Department of Biology and Biochemistry, University of Houston

- 2012 Spring – Department of Biology, Macquarie University, NSW Australia
- 2012 Spring – Guest Lecture, Animal Communication, Macquarie University, NSW Australia
- 2012 Spring – Invited Scientist at University of Queensland, Queensland Australia
- 2012 Spring – Department of Biology, University of Melbourne, Victoria Australia
- 2012 Spring – Department of Zoology, LaTrobe University, Victoria Australia
- 2013 Fall – BIOS 103, UNL guest lecture on Path to Academia
- 2013 Fall – Texas Tech Biology (last minute cancellation due to airfare complications)
- 2014 Spring – Section of Integrative Biology, University of Texas, Austin
- 2014 Spring – Research Development Fellows Program talk, UNL (invited by Office of Research)
- 2014 Spring – Eureka Extension Conference, UNL
- 2014 Spring – Department of Biomedical Sciences, Creighton University
- 2015 Spring – University of Missouri, Department of Biology
- 2015 Spring –Purdue University, Department of Biology
- 2015 Spring –Purdue University, EcoLunch talk
- 2015 Spring –PERT post-doc invited speaker at the University of Arizona
- 2015 Spring – guest lecture – Professional Development class, Math Dept. UNL
- 2015 Spring – guest lecture – UNL Honors Class on Creativity in Science and Art
- 2015 Spring – panelist for CAREER workshop at UNL
- 2015 Fall – Department of Biology, Duke University
- 2015 Fall – SciComm 2015, UNL
- 2016 Spring – Entomology Department, University of Florida
- 2016 Spring – Department of Evolution and Ecology, UC Davis
- 2016 Spring – Animal Behavior Graduate Group, UC Davis
- 2016 Spring – Ecology and Evolutionary Biology Graduate Group, Texas A&M
- 2016 Spring – Skype conversation w/Evolution Class at University of Southern California

INVITED SYMPOSIA & PLENARIES (17 total; * indicates international)

- 2002 Evolution of Communication Invited Symposium Speaker, Animal Behavior Society Meetings, Bloomington, IN
- 2004* Summer - Plenary Lecture, International Congress of Arachnology, Gent, Belgium
- 2005 Spring – Department of Biological Sciences, Idaho State University, graduate student invited speaker
- 2005 Spring – Department of Biological Sciences, Idaho State University, graduate student invited speaker
- 2005 Fall – IEEA Symposium, University of Nebraska
- 2007 Spring - Elkin Isaac Lecturer – Albion College
- 2009 Spring – Invited symposium speaker in the Center for Great Plains Study – Celebrating Darwin’s Legacy Symposium, UNL
- 2010 Summer – Presidential Symposium invited speaker for Animal Behavior Society Annual Meetings
- 2011* Fall – International Bioacoustics Council, La Rochelle France (invited symposium speaker, “Adaptation to the Environment”)
- 2012 Spring – Invited conference/workshop/think tank @ Howard Hughes Medical Institute Janelia Farms (oral presentation and panelist); “Neurobiology and Evolution of Arthropod Acoustic Communication”
- 2012* Fall – Invited Plenary Speaker, European Congress of Arachnology, Ljubljana, Slovenia
- 2012* Summer – Invited symposium on “Novel topics and approaches on the study of communication, reproduction, behavior and ecology of arachnids” – ATBE meeting in San Jose Costa Rica – declined due to scheduling conflicts
- 2013* Summer – Invited symposium speaker on “Learning and Speciation” at Behaviour Conference in Newcastle, UK (summer 2013)

- 2013* Fall – Invited Plenary Speaker @ XXXIth Annual Meeting of Ethology in Sao Paulo Brazil.
- 2013* Fall – Invited Symposium Speaker on “Exploring the proximate and ultimate causes in the behavior of arachnids: learning, sensorial ecology infaticide and mating systems” @ XXXIth Annual Meeting of Ethology in Sao Paulo Brazil.
- 2014 Spring – Keynote Address @ the 31st Annual Science Research Forum at McPherson College, KS (undergraduate-invited speaker)
- 2014 Fall – Invited Symposium Speaker on “Eight-Legged Educators: Exploiting the enigmatic nature of arachnids for public engagement” in symposium entitled “How Cool is Entomology?” Entomology 2014, Portland, OR.
- 2015 Summer - Invited Symposium Speaker on “What are the model systems of our future?” declined due to conflicting symposium organization at same conference (Behaviour, 2015).
- 2016 Summer – Invited Symposium Speaker on “Multimodal Signaling” at *Behaviour* 2016; declined due to prior, overlapping commitments

ORGANIZED SYMPOSIA

- 2015 “Multimodal Signaling: Is it Special?” Behaviour 2015, Cairns, Australia

TEACHING EXPERIENCE

- 1994 – 1995 Laboratory Instructor: Freshman Biology, University of Cincinnati, fall & winter
- 1995 – 1996 Laboratory Instructor: Ecology, University of Cincinnati, spring
- 1996 Laboratory Instructor: Anatomy and Physiology, University of Cincinnati, summer
- 1998 Laboratory Instructor: Marine Biology, University of Arizona, fall semester
- 2000 Laboratory Instructor: Ecology, University of Arizona, fall semester
- 2004 Animal Behavior Course, UC Berkeley
- 2004 Graduate seminar – Dissertation Research, UC Berkeley
- 2004 Graduate seminar – Arachnology Discussion, UC Berkeley
- 2004 Graduate seminar – Research reviews in Animal Behavior, UC Berkeley
- 2005 ~~Animal Communication Course, UC Berkeley~~ -----
- 2006 Research and Design Seminar, UNL (Since arriving at UNL)
- 2006 Introduction to Zoology (undergraduate course), UNL
- 2007 Behavioral Ecology (graduate course), UNL
- 2008 Principles of Behavioral Ecology, UNL (graduate core course)
- 2008 Introduction to Zoology (undergraduate course), UNL
- 2009 Principles of Behavioral Ecology, UNL (graduate core course)
- 2009 Developmental Plasticity and Evolution Seminar, UNL
- 2009 Introduction to Zoology (undergraduate course), UNL
- 2010 Principles of Behavioral Ecology, UNL (graduate core course)
- 2010 Arachnology, UNL (400/800 course)
- 2010 Behavior Lab Group, UNL
- 2011 Principles of Behavioral Ecology, UNL (graduate core course)
- 2011 Arachnology, UNL (400/800 course)
- 2012 Arachnology, UNL (400/800 course)
- 2012 Behavioral Ecology Lab Group, UNL
- 2013 Communication Science through Outreach (400/800 course)
- 2013 Arachnology, UNL (400/800 course)
- 2014 OTS Specialty Course – Ecology and Evolution of Arachnids; coordinator and organizer of entire course of 20 students in Costa Rica
- 2014 Communicating Science through Outreach (400/800)
- 2014 LIFE 121 co-instructor
- 2015 Behavioral Ecology Lab Group, UNL
- 2015 LIFE 121 co-instructor

2015 Arachnology, UNL (BIOS 497/897)

UNDERGRADUATES MENTORED (> 30; * indicates female or minority; ^ indicates author; + indicates graduated with *Highest Distinction*)

Student Name	University	Education post BA (if known)
Josie Thompson	University of Arizona	
Eben Gerring [^]	University of Arizona	MS from UNL; PhD from UT Austin
Heather Mallory [*]	University of Arizona	PhD from Georgetown University
Kasey Fowler-Finn ^{*^}	Cornell University	PhD from UNL
Katarina Cuasay ^{*^}	Cornell University	
Gabriel Alvarado [*]	UC Berkeley	
Jennifer Wesson ^{*^}	UC Berkeley	
Ginevra Ryman [*]	UC Berkeley (URAP)	
Paul Shamble [^]	UC Berkeley (URAP)	PhD program Cornell University
Stephanie Reed [*]	UC Berkeley (URAP)	
Courtney Rudd [*]	Louis and Clark College	
Morgan Campbell [*]	UNL	Medical school
Dustin Franklin	UNL (UCARE)	Medical school
Ying-ying Lim [*]	UNL (UCARE)	Medical school
Bronson Boosalis	UNL (UCARE)	Medical school
Mari Pesek ^{*^}	UNL (UCARE; Honors)	MS University of Kansas
Marie-Claire Chelini ^{*^}	U of Sau Paulo	MS U of Sau Paulo; PhD program UNL
Dan Wickwire [^]	UNL	
Brian Koch	UNL	
Reed Stubbendieck [^]	UNL (UCARE; INBRE; REU)	PhD program Texas A&M
Johnny Konvalina	UNL	
Matt Hansen [^]	UNL (UCARE; REU)	Profusionary school
Dan Hansen	UNL	
Jessica Campbell [*]	UNL	
Sara Potts [*]	UNL	
Rachel Bond [*]	Beloit College	
Caitlin Jones [*]	UNL	
Kate Schwenke [*]	UNL	
Alex Hansen ⁺	UNL (UCARE; Honors)	Medical School
Rachael Schmidt [*]	UNL (UCARE; Honors)	Medical School
Andrew Lehman	UNL	

(10 undergraduates are authors on published manuscript; 5 are first-authors; 2 have manuscripts in prep)

GRADUATE STUDENTS (* signifies co-advised student)***Students in my laboratory***

Student Name	Degree/Yr	Subsequent Training (e.g., post-doc position)	Current Position
Kasey Fowler-Finn	PhD 2009	U. Wisconsin-Milwaukee	Asst Prof. St. Louis U, MO
Dustin Wilgers	PhD 2011	--	Asst Prof. McPherson College, KS
Mitch Bern	MS 2011	M.Ed. Doane College	High school teacher
Steven Schwartz [*]	PhD 2013	Macquarie University, OZ	Lecturer @ Gonzaga University
Malcolm Rosenthal	PhD 2015	University of Toronto; UC Berkeley	Post-doc University of California, Berkeley
Marie-Claire Chelini	PhD current		
Jason Stafstrom	PhD current		
Alissa Anderson	PhD current		

Colton Watts* PhD current
 Tyler Corey PhD current

Students outside my laboratory (committee member)

Student Name	Degree	University
Amanda Tolle	MS	UNL
Ashley Bowers	MS	UNL
Michael Mellon	MS	UNL
Christine Muller	PhD	UNL
Swapna Purandaree	PhD	UNL
Ashley Atwell	MS	UNL
Cassie Martin	PhD	UNL
Chandreyee Mitra	PhD	UNL
Travis Hinkelman	PhD	UNL
Andre Melie	MS	UNL
Heidi Bulfer	MS	UNL
Sarah Cowles	MS	UNL
Lizette Dahlgren	PhD	UNL, Entomology
Nora Youngs	PhD	UNL, Mathematics
Heather Mallory	PhD	Georgetown University
Paul Shamble	PhD current	Cornell University
Kenny Chapin	PhD current	UCLA
James Gallant	MS current	U of Mass Lowell
*Fernando Soley	PhD	Macquarie University, Australia
*Doris Preininger	PhD	Universitat Wien, Austria
*Naila Even	PhD	Macquarie University, Australia
Lindsey Coit	MS current	UNL
Beau Christ	PhD current	UNL, Computer Science
Chelsea Lewis	PhD current	UNL
Emily Hudson	PhD current	UNL

* signifies external thesis examiner

Current students represented by BOLD type

POST DOCTORAL RESEARCHERS ADVISED

Name	Years	Current Position
Andrew Spence	2005 – 2005	RCUK Research Fellow, UK
Diane Blackwood	2004	unknown
Roger Santer	2006 – 2009	Lecturer U. of Aberystwyth, Wales UK
Rodrigo Willemart	2006 – 2007	Asst. Prof. U. Sao Paulo, Brazil
Aaron Rundus	2007 – 2009	Asst. Prof. Westchester College, PA
Laura Sullivan-Beckers	2008 – 2011	Asst. Prof. Murray College
Matt Wilkins	2014 – present	
Rowan McGinley	2016 – present	

GRADUATE STUDENT GRANTS, HONORS AND AWARDS

CURRENT STUDENTS:

JASON STAFSTROM

GRANTS & FELLOWSHIPS

- Organization for Tropical Studies (OTS) Post-Course travel award
- OTS Pilot Award
- Smithsonian Tropical Research Institute (STRI) graduate student fellowship
- Moore Fellowship, UNL 2013
- Moore Fellowship, UNL 2014
- Endeavor Fellowship (travel, stipend, living allowance to do research in Australia for 6 months) at Macquarie University, spring 2015
- Animal Behavior Student Research Grant, 2015
- Sigma Xi Grant-in-Aid, 2015

HONORS & AWARDS

- 1st place prize in EEB poster competition, School of Biological Sciences Graduate Student Symposium, UNL (spring, 2016)

MARIE-CLAIRE CHELINI

GRANTS & FELLOWSHIPS

- Maude-Fling Fellowship, UNL 2013
- Animal Behavior Society Student Research Grant, 2015

HONORS & AWARDS

- Harold Winfred Manter Prize (for outstanding graduate research in zoology), 2015

TYLER COREY

GRANTS & FELLOWSHIPS

- National Science Foundation Graduate Research Fellowship (GRFP) 2015
- OTS Pilot Award

HONORS & AWARDS

- 1st UNL Science Slam winner (spring 2016)

COLTON WATTS

GRANTS & FELLOWSHIPS

- Animal behavior Society Student Research Grant, 2016

ALISSA ANDERSON

GRANTS & FELLOWSHIPS

- Animal behavior Society Student Research Grant, 2016
- Dean's Fellowship (2016 – 2017)
- American Arachnological Society and Roth student research grant, 2016

PAST STUDENTS:

KASEY FOWLER-FINN (2009)

GRANTS

- National Science Foundation, Doctoral Dissertation Improvement Grant, 2008. \$11,998.
- Animal Behavior Society student research award, 2008 (Declined)
- Blair Paxton Udale grant, School of Biological Sciences, University of Nebraska, 2008. \$2,000.
- GANN fellowship research award, School of Biological Sciences, University of Nebraska, 2007. \$2,500.
- Sigma Xi, Grant-in-aid, 2007, \$1,000.
- Blair Paxton Udale grant, School of Biological Sciences, University of Nebraska, 2007 \$1,500

- Initiative for Ecological and Evolutionary Analysis Research, Grant-In-Aid, School of Biological Sciences, University of Nebraska-Lincoln. 2006. \$1,000
- Howard Hughes Medical Institute Undergraduate Research Scholar, 2003.
- College of Arts and Sciences Undergraduate Research Grant, Cornell University, 2003. \$300.

HONORS AND AWARDS

- Animal Behavior Society student travel award. 2009 \$1000 (Declined)
- Student poster award, 1st place, Graduate symposium, School of Biological Sciences, University of Nebraska. 2008
- Student poster award, 2nd place, American Arachnological Society 2007.
- GANN fellowship, School of Biological Sciences, University of Nebraska 2007-2008.
- National Science Foundation Graduate Research Fellowship, awarded in 2004

DUSTIN WILGERS (2011)

GRANTS

- Biological Sciences Travel Grant, 2009 \$500
- Special Funds, School of Biological Sciences, University of Nebraska, Lincoln, 2008, \$1500
- Travel Grant, School of Biological Sciences, University of Nebraska, Lincoln, 2008, \$500
- Sigma Xi Grant-in-Aid, 2008, \$813
- Special Funds, School of Biological Sciences, University of Nebraska, Lincoln, 2007, \$1000
- Animal Behavior Society Student Research Grant, \$800, 2010
- Special Funds, School of Biological Sciences, University of Nebraska 2011 \$400

HONORS AND AWARDS

- UNL Research Fair Outstanding Graduate Student Poster, 2009
- Maude Hammond Fling Fellowship, UNL, 2009
- Biology Graduate Student Symposium Poster Competition, 1st Place, 2009
- 2nd place in poster competition at Midwest Ecology and Evolution Conference, 2009
- Collins award for excellent in Kansas Herpetology – Kansas Herpetological Society, 2008
- Honorable Mention, Outstanding Graduate Research Assistant Award, University of Nebraska, Lincoln, 2008
- GANN fellowship, School of Biological Sciences, University of Nebraska 2008
- GANN fellowship, School of Biological Sciences, University of Nebraska 2007
- GANN fellowship, School of Biological Sciences, University of Nebraska 2006
- Honorable Mention, Outstanding Graduate Research Assistant Award, UNL, 2009
- Graduate student representative for the American Arachnological Society Executive Committee
- Offered a tenure-track position at St. Gregory's college in Shawnee, OK (spring 2011) – declined
- Offered an adjunct faculty position at Sterling College, KS
- Offered position as Assistant Professor at McPherson University, KS - accepted

STEVEN SCHWARTZ (2013)

HONORS AND AWARDS

- GANN fellowship, School of Biological Sciences, University of Nebraska 2006-2007.
- GANN fellowship, School of Biological Sciences, University of Nebraska 2007-2008.
- GANN fellowship, School of Biological Sciences, University of Nebraska 2008-2009.

MALCOLM ROSENTHAL (2015)

GRANTS & FELLOWSHIPS

- Dean's Fellowship, UNL 2013

MISCELLANEOUS AWARDS

- American Arachnological Society Travel Awards – Mitch Bern (MS student), Dustin Wilgers (PhD student), Mari Pesek (undergraduate)
- SBS Special Funds Undergraduate Travel Scholarship – Matt Hansen