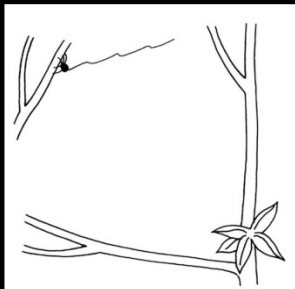
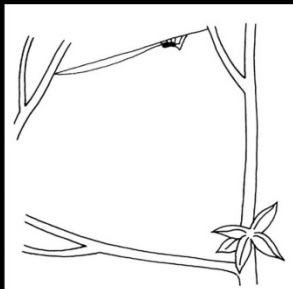




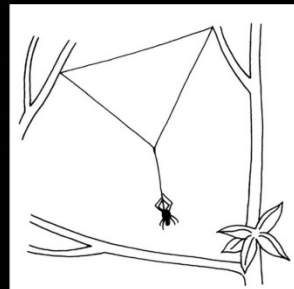
How do spiders build their webs?



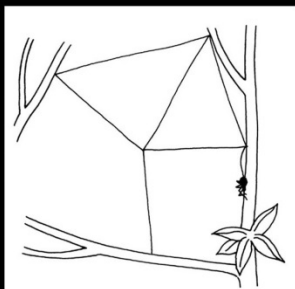
Floating the bridge line across a gap on air currents.



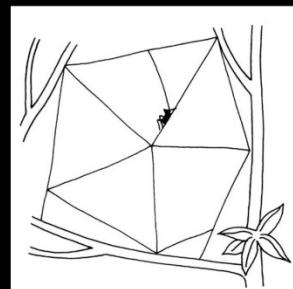
Strengthening the bridge line.



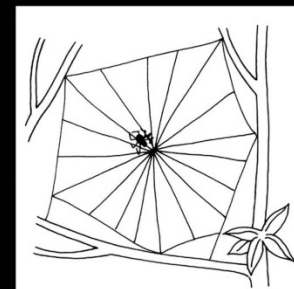
Making the basic 'Y' shaped framework.



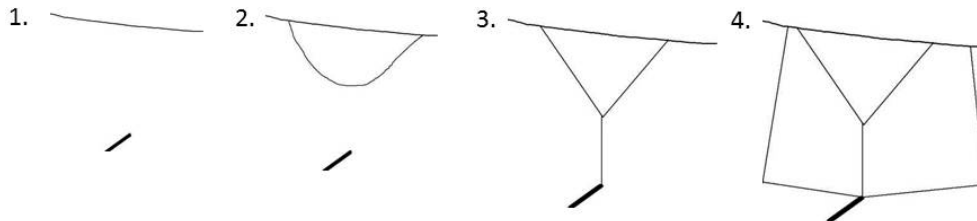
Making the frame threads.



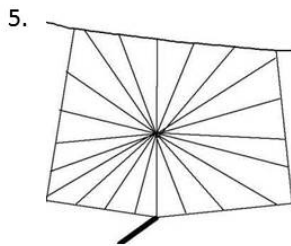
Making the radial support lines (the web 'spokes').



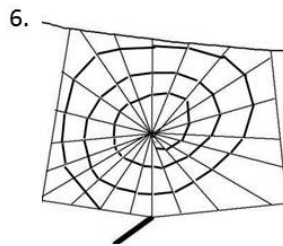
Laying down the sticky silk in a spiral towards the centre while removing the 'scaffolding' spiral line.



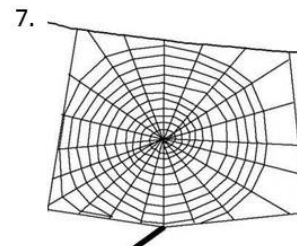
All radii and frame threads are made from silk from the Major Ampullate Gland.



Anchor threads and radii are in place.



This temporary capture spiral is made from silk from the Minor Ampullate Gland.



This capture spiral is made from sticky silk from the Flagelliform gland